

# PLAT NO.-2 JENSEN HIGHLANDS

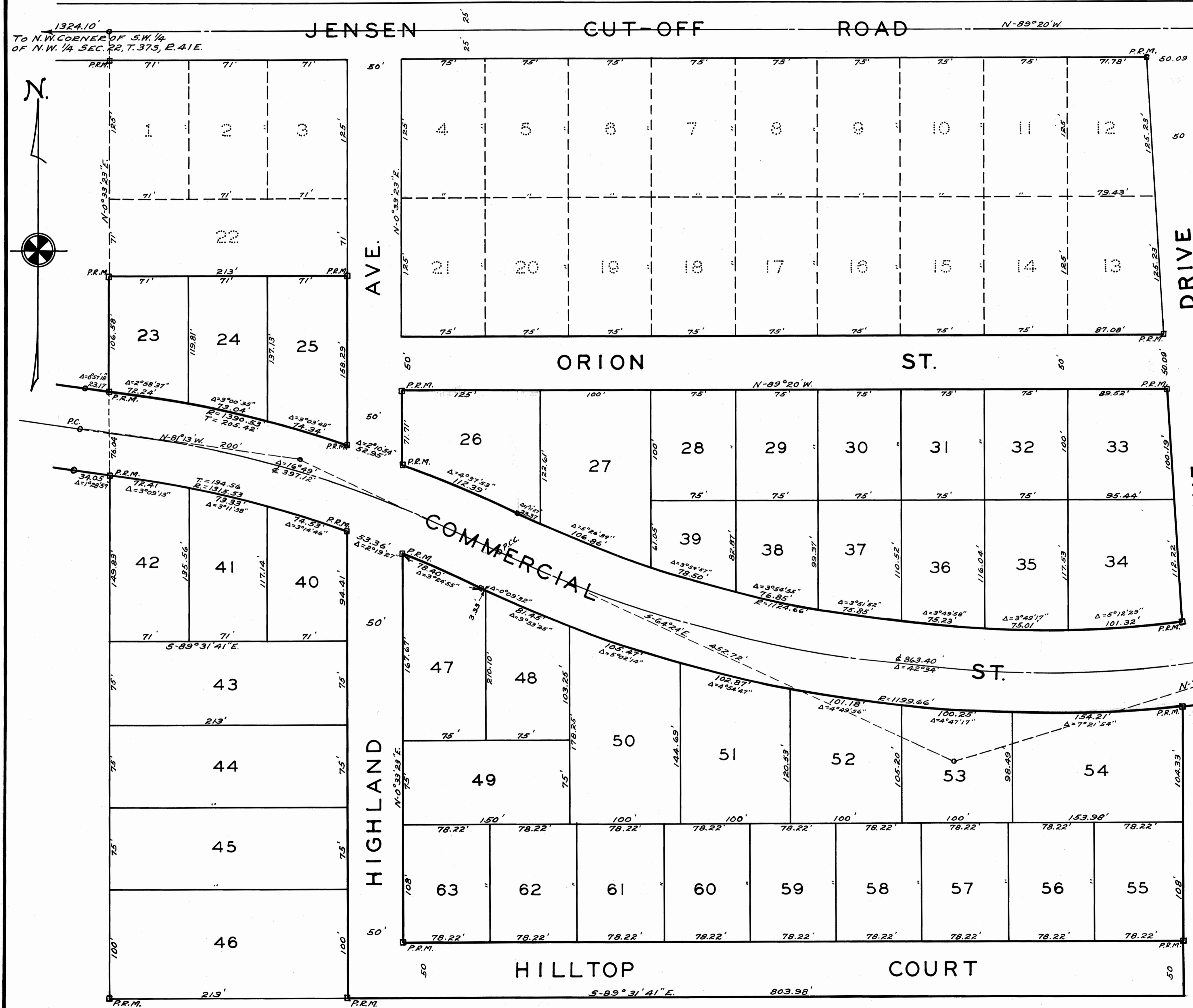
A SUBDIVISION OF A PART OF THE SOUTHEAST 1/4 OF THE NORTHWEST 1/4 OF SECTION 22, T.37, R.41E.

MARTIN COUNTY, FLORIDA.

SCALE 1" = 50'

APRIL, 1957.

THIS PLAT FILED FOR RECORD AT 3:10 P.M. THIS 23<sup>RD</sup> DAY OF April A.D., 1957 AND RECORDED IN PLAT BOOK 3 PAGE 64 IN THE OFFICE OF THE CLERK OF THE CIRCUIT COURT, MARTIN COUNTY, FLORIDA.  
CLERK OF THE CIRCUIT COURT Dorothy P. Price  
FILE NO. 57098



### DEDICATION STATE OF FLORIDA } COUNTY OF MARTIN } SS

Know all men by these Presents, That EDWARD H. YERG & GLADYS B. YERG, his wife, ERIC ANDERSON & THERESA S. ANDERSON, his wife, DOROTHY E. WEISS, wife of W. J. WEISS, and W. J. WEISS, have caused the attached Plat to be made and the land subdivided as shown hereon and hereby affirm that we are the owners in fee simple of the land subdivided and hereby dedicate, to the perpetual use of the public, the roads shown hereon, reserving however unto ourselves, successors, assigns or legal representatives, the reversion, or reversions of the Roads whenever abandoned by the public, or discontinued by law.

Signed and sealed in the presence of  
James E. Brock  
WITNESS  
Mignon L. Rowe  
WITNESS

EDWARD H. YERG  
GLADYS B. YERG  
ERIC ANDERSON  
THERESA S. ANDERSON  
DOROTHY E. WEISS  
BY W. J. Weiss AS ATTORNEY  
SEAL IN FACT FOR THE  
ABOVE NAMED PERSONS  
W. J. Weiss INDIVIDUALLY  
SEAL

### ACKNOWLEDGEMENT STATE OF FLORIDA } COUNTY OF MARTIN } SS

Before me this day personally appeared W. J. WEISS, to me well known to be the executor of the foregoing instrument and who acknowledged to and before me that he executed the dedication hereon shown for the uses and purposes therein stated. WITNESS MY HAND AND OFFICIAL SEAL AT Stuart Martin County, Florida, This 5<sup>th</sup> Day of April, 1957.

Mignon L. Rowe  
NOTARY PUBLIC  
My Commission Expires March 4, 1960

### CERTIFICATE STATE OF FLORIDA } COUNTY OF MARTIN } SS

I hereby certify that I have surveyed and platted the tract of land shown hereon, and that said plat is a true and correct representation thereof, to the best of my knowledge and belief, and that permanent reference monuments have been placed as prescribed by law.

James E. Brock  
REGISTERED LAND SURVEYOR  
FLORIDA CERTIFICATE NO. \_\_\_\_\_  
Subscribed and sworn to before me this 5 Day of April  
A.D., 1957.  
Mignon L. Rowe  
Notary Public  
My Commission Expires March 4, 1960

### APPROVED April 23, 1957

Board of County Commissioners  
By: Stephen E. Liden  
CHAIRMAN

STAFFORD & BROCK  
CIVIL ENGINEERS  
LAND SURVEYORS  
STUART - FLORIDA